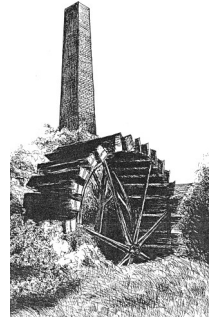


WANDLE INDUSTRIAL MUSEUM



BULLETIN



Contents

Annual General Meeting Chairman's Annual Report	3
Operations Team Activities 2017-18	5
100th Edition	7
A Walk Along the River Wandle	8
Museum Photo Archive	9
Wandle Treasurers Map More Art Work!	10
Taking Liberties New Morris Designs	11
Wandle Vistas	12
Operations Team Report: Recent Activities	13
Dates for the Diary Help Needed	14
Melanie's Walks	15

WANDLE INDUSTRIAL MUSEUM

PRESIDENT
Harry Galley

TRUSTEES
Nicholas Hart, John Hawks,
and Fr David Pennells

OPERATIONS COMMITTEE
Alison Cousins, Eric Shaw,
Roger Steele, and Michael
Taylor

Editorial

Christmas is almost here and its time for another copy of our quarterly bulletin. This year the museum celebrated 35 years since we were founded. At our recent AGM we enjoyed cake to commemorate the occasion.

In this issue we have included a piece that appeared in the *The Evening News* of April 1919 describing a walk along the River Wandle. It certainly was interesting comparing it to today's Wandle Trail.

Check out our opening hours for Christmas and New Year. Hopefully a number of you will be able to make our New Year lunch at Park Place (see page 13).

In the meanwhile, from all of us at the museum, have a Very Merry Christmas and a Happy New Year.

Best wishes,
Mick Taylor (Guest Edition)

Cover Picture:

To celebrate the thirty-fifth birthday of the museum a cake, made by Mary Hart, was shared with all those who attended our Annual General Meeting.

The cake shows the three logos that have been used by the museum.

Annual General Meeting

The museum held its AGM at the Vestry Hall, Mitcham on Thursday 15th November. The guest of honour was the Deputy Mayor of Merton Councillor Geraldine Stanford. The guest speaker was Sarah Gould from Merton Heritage Service. Sarah gave an excellent talk (*see picture right*) about the industries of the Merton within the Wandle Valley and they contribution to the war effort during the 1914-1918 conflict. She included information on some of the people who worked in the industries.



Prior to the meeting starting the anniversary cake, made by Mary Hart and pictured on this issues front cover, was cut by our longest servicing volunteer Eric Shaw. Eric has been associated with the museum for over thirty years.

The meeting started with Father David Pennells giving his first report as Chair of the Trustees.

Chairman's Annual Report 2017 –2018

The Museum

This is my first Report in the role of Chair of Trustees of the Wandle Industrial Museum Ltd. Our role as trustees is mainly supervisory, with day to day operations fully in the hands of the Operations Team. The attached Operation Team Report deals with much of what I would otherwise say, and once again shows what impressive outreach we are achieving. I hope you will all join with me in applauding the hard work and dedication they have shown.

When the Museum was first conceived in 1982 by our President, Harry Galley, and his colleagues it was to be a lone voice promoting the heritage of the Wandle Valley and, although it had a special interest in

the Industrial History, it relied on Merton Historical Society to help it adopt a much broader remit in promoting all the other aspects of the area – hence the first Wandle Trail Map, aimed specifically at those with disabilities. Now we are able to let the many other groups which have sprung up in our wake to cover this wider remit, and I would like to take this opportunity on behalf of the Museum to congratulate all these bodies for the work they are doing and to appreciate the collaborative way in which this is done - with special reference to Living Wandle Landscape Partnership including the Wandle Valley Regional Park, Cricket Green Community including Friends of the Canons, Priory Trust, Wandle Heritage, and Wandle Valley Forum, and of course the continuing support from Merton Historical Society not forgetting Sarah Gould and LB Merton's heritage services.

Accredited Museum

As noted last year, with thanks to the persistence and determination of the Operations Team that enabled us to continue as such, we are a fully Accredited Museum.

Investing in Volunteers Standard

We have continued to comply with the maintenance of our registration with the Investors in Volunteers Award to comply with on-going standards.

Support

Thanks to the London Borough of Merton for financial support, the provision of premises and most importantly the Officer support.

Mentor

Chris Taft of the Postal Museum fulfils this role for us under its new title of 'Mentor', and we are most grateful for this, and for his agreeing to continue in this post. He has notified us that he will be standing down from that role in 2 years' time, which gives the team time to identify a replacement.

Father David Pennells (Chair)

After the Chair's report Alison Cousins delivered a report on the activities of the Operations Team and the volunteers over the last twelve months.

Operations Team Activities 2017-18



Alison Cousins delivers the Operations Team Report.

Outreach

Our walks, talks and printing workshops are reaching out to more groups and are taking us much further afield - even to North London !! John Hawks is proving to be an invaluable member of the “talks” team. We estimate that we have delivered our presentations to at least 700 people during the year. Locations include schools, guide huts, church halls and libraries and even a park cafe. Differing facilities make for interesting challenges. We even have a booking as far ahead as 2020!

New Volunteers

Sadly we said goodbye to Martin Roberts who has abandoned Mitcham for sunny Sussex, but we welcomed Chris Tanner as a new front of house assistant, Serena Crouch as a new general assistant, and Fiona McKelvie as a Sunday volunteer. Matt Cousins, who looks after our web pages will shortly be moving to Canada and we wish him all the best. Despite our best efforts a replacement for him has not yet been forthcoming. For Volunteers Week in June we arranged a visit to the ongoing improvements to the Chapter House at Merton Priory (followed by ice creams at Merton Abbey Mills.)

Successful Bids

In the New Year we were awarded a Conservation Grant from the Arts Council to purchase new storage materials for our printing blocks and maps. This was also augmented by a donation from local company Zotefoams of material to line the boxes of blocks.

Thanks to the efforts of Siobhan Kneale we were also successful in obtaining £1,000 from Tesco’s Bags of Help scheme. This will go towards funding a herb garden at the front of the museum and for decorating the panels which currently cover the windows.

Training

Taking advantage of free sessions organised by the Living Wandle Landscape Partnership, Siobhan Kneale attended a workshop on writing for interpretation and Alison Cousins attempted to get her head around one on GDPR (General Data Protection Regulations). Peter Cousins

attended the annual meeting of SERIAC - SE Region Industrial Archaeology Conference.

Collections

It has been a good year for donations. Several stunning watercolours of Wandle mills arrived in good time to be included in our summer exhibition and a wonderful portfolio of drawings and notes followed soon after.

Mick Taylor purchased a large stone flagon from Thunder and Little's Mitcham Brewery which we have now added to our display on brewing.

We have also received many books, including some expensive local history titles, maps, and some newspaper cuttings from the 1940's – our thanks to all donors.

Digitization of the museum's extensive collection of photos continues and has now reached a previously undocumented batch of negatives.

Events

Significant dates this year include marking 35 years since the museum was founded, and 30 years since the first Wandle Trail walk was organised in connection with the museum. We are celebrating the former at the AGM and for the latter Mick Taylor produced a special issue of our Bulletin in the summer which marked the 100th edition.

Our annual exhibition in June achieved the grand title of "The Wandle Portrayed" – our attempt to show examples of literary and artistic contributions both amateur and professional, depicting the Wandle.

The museum hosted the launch in March, of the "Mapping the Mills" map, produced by The Building Exploratory. Mick Taylor was instrumental in helping the group with this project.

We supported Merton's Discovery Day at Morden Library once more in May, hosted a block printing workshop on June 3rd as part of the Wandsworth Heritage fortnight along with a talk on The Calico People at Wandsworth Library, set up our stall on Mitcham Cricket Green for the Community on the Green day in July, and for Mitcham Heritage Day on September 8th we saw around 90 visitors.

Our annual Christmas / New Year lunch for members and volunteers was held as usual at the Toby Carvery in Mitcham on January 10th.

Social Media

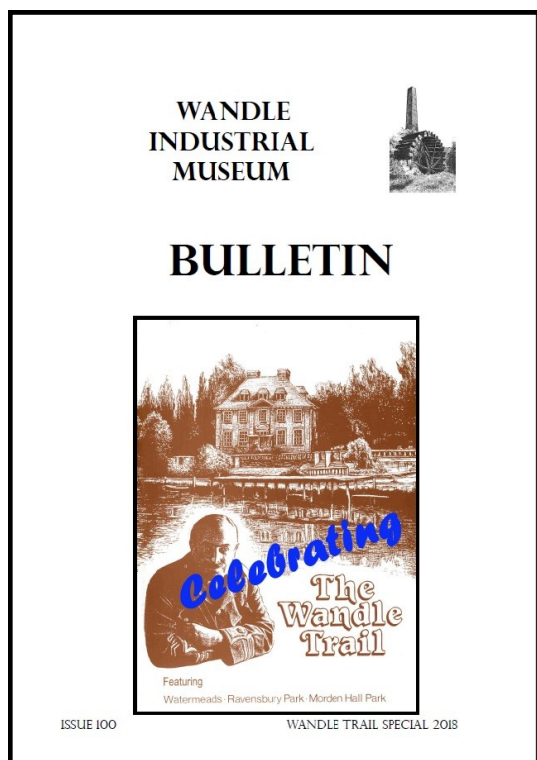
We have developed an Instagram account using our archived photographs. This has developed quite a following and increased awareness of, and interest in, the museum amongst a section of the community previously not reached.

Using the IZI Travel platform two audio trails have been created, with a third in development. These are updated versions of the “An Hour Passed” booklets which were published in the 1980’s.

Visits

Following Derek Prentice’s superb talk at the AGM it felt only natural to visit the Ram Brewery amidst the creation of the Ram Quarter in Wandsworth in early December. Getting into this holy of holies felt a bit like trying to breach Fort Knox as we had to sneak into the former stable yard through an unmarked door. A full report and photo was in the Spring edition of the Bulletin.

100th Edition



The last issue of the bulletin was a special edition celebrating 30 years of the Wandle Trail.

What did go under the radar was that this issue was also the 100th edition of our Newsletter/Bulletin. The first having been produced in 1990.

Whilst the last issue of the bulletin celebrated walks along the River Wandle. Those in 1988 were certainly not the first. The following pages are an article from The Evening News on 4th April 1919.

The article was included on a CD in the museum archive from a project involving Burntwood School in 2003.

A walk along the River Wandle The Evening News 4th April 1999

THE EVENING NEWS. FRIDAY, APRIL 4, 1919.

RIVERSIDE WALKS.

No. 1.—BY THE WANDLE.

By THE PATHFINDER.

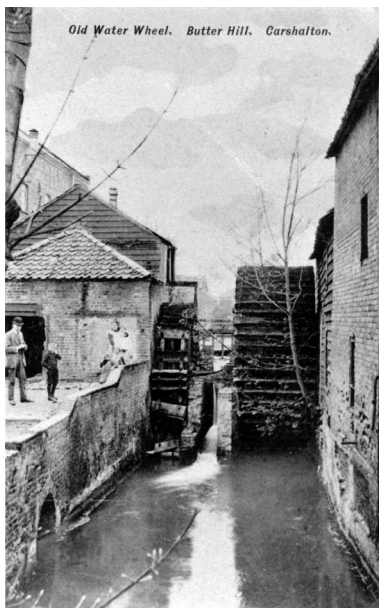
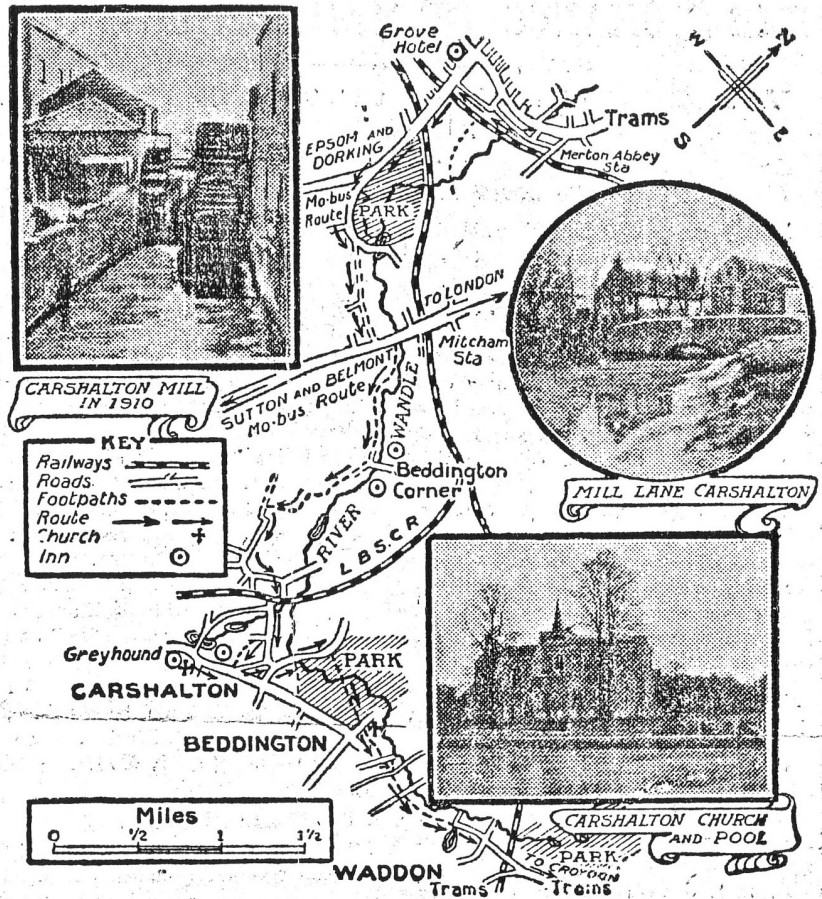
IN choosing the Wandle for the opening ramble of the year and giving it thus pride of place amongst London's little rivers, I was influenced chiefly by its nearness and beauty. It is a most companionable stream, and its banks are more accessible to the public than those of other rivers.

Had our forefathers been wise, all London's little rivers would have had green margins, unbuilt on and free as air to the rambler, from source to mouth.

But we must take them now as we find them, and the Wandle we shall find still clear, pretty, and wayward for many miles. With these characteristics it combines the practical; for it drives many mills in its short course. Two huge flour mills are at Waddon, close to its source, where they look like giants towering above an infant and compelling it to work.

We can miss that part of the river between Wandsworth and Wimbledon; we shall not miss much except factories and sewage farms, I can assure you.

We will start from the bridge on the main London to Epsom road (motor-buses 32, 107, 107a, and L.U.E.T. trams from London, which connect with the L.C.C. trams at Tooting.



Two of the pictures in the article are held in the museum archive. Both are of the mills at Butter Hill, Carshalton.

THE LAST OF THE ABBEY.

Getting off at the river, turn left along the asphalt path to the station road at Merton Abbey. Here turn to the right past the station. Notice beyond, on the left, an old gateway battered and sunken. This and the walls are all that remain of the once famous abbey.

The mean streets on the right cover the site of Nelson's old home, and the by-way you are on (High Path) was his route to Merton Church, a mile westward, where he worshipped.

High Path ends in the main Epsom road. Turn left and follow this over two railway bridges to the Croydon-road (left), which follows. The Wandle, divided into many channels, is just inside the park on the left. This is a pleasant road. Keep left at the first branch and at the next bend (leftwards, by Butter's snuff mills) turn to the right along Wandle-road. This runs parallel nearly with the river, and is a rough green byway leading out to the Sutton-road, close to the river and bridge (a pretty "bit" for the photographer).

Take the sign-posted footpath (to Beddington Corner), following its twisting lines to the mill there.

STRAWBERRY-LANE TO BUTTER HILL.

Then, not crossing the bridge, bear to the right past the hospital, following the path out to a rough green lane.

Turn left and go ahead to Wrythe Green, Carshalton, and bear, left, past Carshalton College to the high road. Again keep left to the first right turning (Strawberry-lane on side fence).

Go down this to the river, under the railway—a pretty corner—and left over the old brick bridge. Then go up Butter Hill to a first right turning, and take the open footpath across the allotments out to a road.

Here turn right for Carshalton village: one of Surrey's beauty spots. Its famous pools where a feeder of the Wandle rises, drain the great chalk downs behind the village. Time was when trout was caught here.

A PRETTY BIT OF RIVERSIDE.

Retracing our steps to the fork where the Croydon and Mitcham roads diverge, we take the left branch Londonwards. We cross the river, another pretty bit by the smithy, and soon reach a footpath on the right (to Beddington Church), which crosses Beddington Park.

This is a very pleasant track, and after crossing a bridge there is a particularly charming stretch of the river on the left, with the red buildings of the Hall and the grey tower of the church in the distance. There is hardly a prettier, more characteristically South English scene within 50 miles of London.

On reaching the church (well worth a visit if you have time), keep ahead by the path, which passes the churchyard and an old-world garden, over whose bulging red-brick wall you get glimpses across the river to the left.

THE WADDON WATER-SPLASH.

At a quaint high-shouldered group of cottages bear left down to the river and then right. From here the direction is signposted (Footpath to Croydon) and obvious. At one stretch the river occupies the road, which is well shaded with trees.

The path passes one of the sources—the main one—on the right; a large sheet of clear spring water; you can see it welling up in the deep pits with an oily swirl.

Soon you come to Waddon: a mixture of old and new, industry, agriculture, and suburbia. At the cross-roads keep straight ahead, and on crossing the L.B. and S.C.R. you will come to the Croydon Tramway lines at West Croydon.

For Wandle Park, the farthest point of the river, turn left, but there is little to tempt you there, the local gas works are too prominent in the landscape.

Instead keep ahead by the tram lines to West Croydon's fine church, and, where the trams turn to the left, go ahead to the centre of the town, via Crown Hill, to the Whitgift Hospital.

This makes a nine to ten miles walk, and finishes at a point where there are motor-buses and trains Londonwards every few minutes.

Museum Photo Archive

Over the last couple of years the museum photo archive has been digitised by our volunteer Peter Cousins. He is now working on scanning and copying the collection of negatives and slides that we have. A number of the photographs that Peter has worked on can be found on Flickr. Search for 'People > WIM Archive' to see the pictures. It may be that this is not the permanent home for our collection. This is due to changes in the structure of Flickr.

Wandle Treasures Map

If you have visited the museum recently you hopefully have seen the copy of the Wandle Treasures Map above the doorway. The ink on paper map was produced by Stephanie Theobald in 2015.



The Wandle Treasures Map celebrates the history of the River Wandle, which passes through Croydon, Sutton, Merton and Wandsworth before flowing into the Thames. It was commissioned by the Building Exploratory in 2015 as part of Wandle Treasures, a local heritage project in which volunteers identified and researched 50 'treasures' associated with the River Wandle.

Hand drawn by artist Stephanie Theobald, the Wandle Treasures Map captures the beauty and uniqueness of the River Wandle and its rich and varied history.

More Art Work!



The Treasures Map artwork wasn't the only one to turn up at the museum. In mid-July we had a visit from a graffiti tagger. Not the type of work you want to see.

Quickly spotted we were able to soon cover it up. Let's hope we don't get a return visit.

Taking Liberties

When we are asked if Arthur Liberty and William Morris ever met, we categorically reply in the negative. However, an exhibition currently on at the Dovecot Gallery in Edinburgh manages to link the two names at least.

“Liberty: Art Fabrics and Fashion” contains most of the exhibits which we saw at the Fashion and Textile Museum in Bermondsey a few years back, but for this Scottish presentation there are more Jean Muir creations, and a totally new section showing the work of Marion Donaldson (who designed a Paisley patterned wedding dress in the 1960’s). The link between the Liberty style and the Morris heritage comes with the juxtaposition of examples of smocking on Liberty children’s dresses with photographs of the Morris workers who trained the Dovecot apprentices, all wearing artists’ smocks. This is the photo of John Glassbrook, Gordon Berry and colleagues which the studio used in a previous exhibition, and which was reported in our Spring 2017 Bulletin. The exhibition also acknowledges the fact that the Liberty Works were based in “Wimbledon” near William Morris’s works.

New Morris Designs

Inspired by William Morris’s journey to Iceland recorded in his journal in 1871, Morris & Co. have produced a new range of fabrics and wallpapers called “Pure Morris North”. Unlike the deep colours of the traditional designs these reflect the Icelandic landscape and are predominantly silver and grey metallics. The original patterns are reworked with these colourways and renamed. Examples showed below Copyright Morris & Co). To see more visit: <https://www.stylelibrary.com/morris&co/>



Pure Bachelors Button



Pure Honeysuckle &
Tulip

Wandle Vistas

The Wandle Vistas was one of the many projects that came out of the Living Wandle Landscape Partnership heritage lottery funding. Having identified in the region of 50 different views across the Wandle Valley they ended up with a final ten. The location of nine of these views have been added to the relief map of the Wandle Valley that we have at the museum. There are also maps available that explain the views.

The museum was very pleased to hear that the project has won a major prize at the Landscape Institute Awards in their category of 'Landscape, Policy and Research'. A very well done to Untitled Practice, Fiona Fyfe Associates and all the volunteers involved in the project.

More information can be found at:

<https://www.landscapeinstitute.org/journal/celebrating-people-place-nature-awards-2018/>

LANDSCAPE POLICY AND RESEARCH

WINNER
WANDLE VISTAS

Landscape Architects: Untitled Practice and Fiona Fyfe Associates
Client: Living Wandle Landscape Partnership Scheme
Graphic Designer: Studio Apul
Video Production: Bobbin Productions

The ambition behind this project was to explore the identity of the Wandle Valley as a distinct region with its own signature landscape; to define a 'Wandle Vista' and embed this into planning policy; and to act as a stimulus for legacy projects. The requirements were to produce a technical document and a community-inspired legacy output, which would include the training of local volunteers.

Landscape architects Untitled Practice and Fiona Fyfe Associates were lead consultants. One of the key innovations of Wandle Vistas was the use of rural landscape techniques within an urban context. The project was an effective celebration of the under-represented qualities of the Wandle Valley, from downland to delta. The planning document communicates the potential of the Regional Park as an interconnected asset and sets opportunities for delivering green infrastructure and landscape management in a co-ordinated approach across four London boroughs. Crucially, it also connects people with place, promoting health and wellbeing benefits and sustainable travel options.

The project exceeded the client's expectations, delivering their vision and legacy aims, building appreciation for the landscape scale and partnership working to protect and enhance the Valley. To the profession, it is an exemplary project of engagement and communication, supporting education and decision-making at sub-regional and local-landscape scales.

THE JUDGES SAID:
Lovely, well-designed range of documentation with a wide variety of uses – in education, interpretation, policy, best practice.

46 LANDSCAPE INSTITUTE AWARDS 2018

LANDSCAPE INSTITUTE AWARDS 2018 47

Operations Team Report - Recent Activities

We have been as busy as ever with talks and visits this autumn. We travelled to Shirley, Croydon, Raynes Park, Beddington, West Wickham, Ewell, and Leatherhead, speaking on The Calico People, Merton Abbey Mills, Mitcham Lavender, Mills of the Wandle, Brewing in the Wandle Valley, and William Morris. The projector seems to get heavier each time !

We welcomed the Mother's Group from Benedict School, Horsley U3A, and Earlsfield Townswomen's Guild for a visit and block printing workshop and a group led by Melanie Nunzet celebrating 30 years since the first Wandle Trail walk. We took a stall to the Mitcham Cricket Green Community on the Green event on 25th July on a blisteringly hot day, and opened the museum all day on Saturday 8th September for Mitcham Heritage Day, when around 90 visitors came.

It has been a good year for donations, and the addition of a wonderful file of unique drawings, all fully referenced and dated, done by Arthur Victor Hine, who lived between 1914 to 1997 was immediately added to our current exhibition on the art and literature of the river. Generously donated by his son Martin, it is called "The Wandle Valley in Pictures : a short history " .

We have also purchased a large stone flagon originating from the Thunder and Little Mitcham Brewery. It is rare for us to be able to find the funds for such items and for them to be available at all, so congratulations to Mick Taylor for being in the right shop at the right time !





Dates for the Diary

19th December 2018

Volunteers Christmas Thank You

All volunteers are invited to join the Operations Team from midday for mince pies and Mulled Wine.

Museum Christmas and New Year Closure

The museum will open its doors for the last time in 2018 on Wednesday 19th December. We will then remain closed until we reopen on Wednesday 16th January 2019.

9th January 2019

New Year Lunch

Members and volunteers are invited to join us for our annual New Year lunch at Park Place, Mitcham. See page 13 for details.

Watch Out For the Museum of London (Docklands) Secret Rivers Exhibition. Due to open in May 2019 it is expected that the River Wandle will be featured.

Help Needed

Do you have knowledge of HTML or have any experience looking after websites? Then you may be the person we need. In a couple of months time we will lose the services of our volunteer Matt Cousins who has looked after our website for the few years.

The work involves making changes to the website as required to the website and updating the home page once a month.

If you are able to help then please drop and e-mail to the museum (GeneralManager@wandle.org) or telephone the museum on a Wednesday (020 8648 0127).

Melanie's Autumn/Winter Walks and Events 2018-19



Please email me on mlnnunzet@gmail.com to be added to my mailing list. Please note the second letter is an 'l' not an 'i'. Or call 07944 833605 for further info.

Come and join us for a free and friendly hour's walk around Beddington Park or Waddon Ponds every Friday morning at 10 am. Meet outside St Mary's Church, Church Road, Wallington SM6 7NJ (Buses: 407 from Sutton, 463 from Mitcham). Refreshments available at church after walk. Mince pies on 21 December! Voluntary contribution to church funds. Tour of church possible.

For all walks starting at Mitcham Junction meet at bus stop on bridge. Please email or text me to check that the Jan and Feb walks are taking place.

Date	Meeting place/time	
Sat 1 Dec	Honeywood Museum 1 - 6 pm	Carshalton Frost Fair. There will be a craft stall, farmers' market, hot food including a hog roast and live music. Inside the museum there will be a Santa's grotto, magic shows and storytelling. Sutton Ecology Centre will be hosting a Winter Wonderland Trail from 1pm to 4pm. The Christmas lights switch on takes place in Carshalton High Street at 6pm.
Sun 9 Dec	Mitcham Junction 2 pm	Mitcham Walk - A gentle stroll around Mitcham Common and the Canons, finish Park Place. 3-4 miles, linear.
Sun 13 Jan	Mitcham Junction 2 pm	Wandle Walk - Mitcham Common to Beddington Park and Carshalton. Refreshments at Honeywood Museum. Return to Mitcham Junction along the Wandle Trail to include Watermeads. 5-6 miles.
Sat 23 Feb	Mitcham Junction 10.30 am	Mitcham Walk - A gentle stroll around Mitcham Common and the Canons, finish Park Place. 3-4 miles, linear.



Museum Mentor: Chris Taft, British Postal Museum and Archive.
Museum Advisor: Yvette Shepherd, Museum of London (Docklands).

A full colour version of this newsletter is available online at www.wandle.org. If any subscriber is happy to receive the newsletter by email, could you please send a request to office@wandle.org. This helps us to reduce our costs.

The Wandle Industrial Museum, the Vestry Hall Annexe, London Road,
Mitcham, Surrey CR4 3UD. Tel: 020 8648 0127

Company No 01792482, Charity No 288655.



OPEN: Every Wednesday 1 ~ 4 pm;
Every Sunday 2 ~ 5 pm.
(The Museum is closed Bank Holiday weekends)

The Museum is also open to schools and groups by appointment.



Admission: Adults 50p, Children & Senior Citizens 20p

The Wandle Industrial Museum would like to point out that the views of contributors to this newsletter are not necessarily the views of the Museum. We would be happy to give the right to reply to anyone who finds the content contentious.

All contributions and news items gratefully received and appreciated - please feel free to let us know at any time - telephone or write or email to office@wandle.org

You can find us on:

